

REMOTE ISLAND MINISTRIES *Oceanic Asia*

Missionaries Glen, Paula & Juli Knight

December 2013

Volume 7, Issue 9

Special points of interest:

- *What we didn't see coming...*
- *Sails for the Sailing Ship!*
- *Mobilizing Aid to Victims*
- *December's Work Moves Ahead*
- *Bibles for the Philippines*
- *January & February Helpers...*
- *Photo of the Month*
- *A Final Word*

What we didn't see coming...

Glen Knight

Super typhoon Haiyan (Yolanda) roared through the central Philippines on November 9, 2013 leaving in its wake, thousands of casualties, tens of thousands injured and more than one million people homeless. Its path left little time for early warnings and with a typically poor governmental infrastructure, little or no plan was fixed in advance to deal



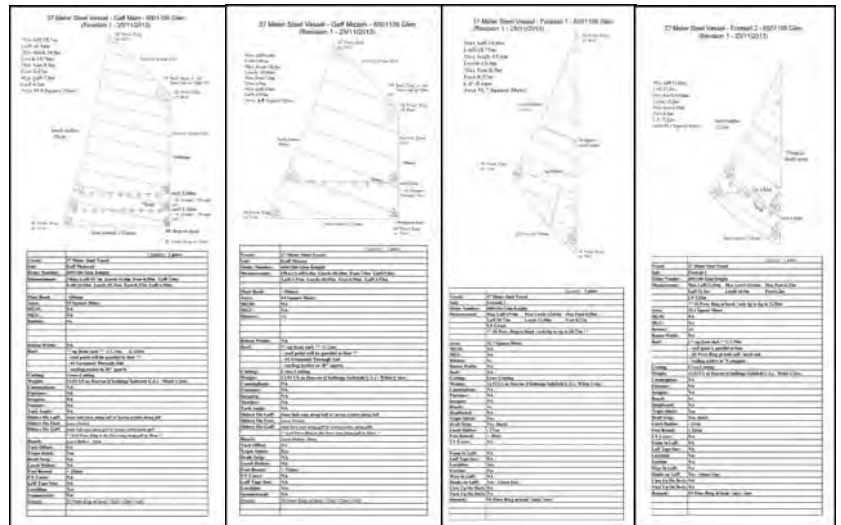
Photos above and top, right are of Tacloban City, Leyte before landfall and afterward, courtesy of UNICEF. Our place in Mindanao was not in the direct path of the storm.

with the aftermath. What is so often the case of searching for survivors, burying the dead and picking up pieces of shattered lives in the Philippines is once again the situation now. News reports show photos from population centers where the majority of relief efforts are ongoing. What is not shown are the thousands of small villages on islands that aid agencies cannot reach. Remote Island Ministries is poised to reach into such places soon after the first of the year and will remain for much of 2014.

“Remote Island Ministries is poised to reach into such places soon after the first of the year and will remain for much of 2014.”

Sails For the Sailing Ship!

The drawings to the right are of our sails which are under construction at this time by Fareast Sails, Ltd. of Hong Kong. Thanks to offerings received from many in response to our report in the November Newsletter, they are paid for in full! Completion of the sails will be by the last week of this month and delivery to our home port in Davao City should be the first week of January. Once they arrive we will immediately install them and begin our sail training. We have a lot of work to do on the ship to get her ready to sail to Balut Island and later to Samar and Leyte in the Visayan region. Thank you for helping us!



Mobilizing aid to the victims...

The effects of typhoon Haiyan (known in the Philippines as “Yolanda”) go beyond what photographs can depict. While many very good relief organizations have moved quickly and many of our churches have sent money directly to Filipino churches with whom we are connected, there is another effort underway. Remote Island Ministries, in concert with many individuals, churches and aid organizations in the USA has mobilized much aid via four freight containers that are presently en route to our home port, Davao City. The photo at the right shows two of these containers at the warehouse of Worldwide Literature and Missionary Supply in Hamburg, AR on Thursday, December 5, 2013. The supplies include generators, power tools, water filters, clothing, emergency lighting systems, first-aid supplies and hygiene kits. Included as well are three reverse osmosis water makers, one of which will be installed on the sailing ship and the other two for use as mobile units. With these more than 7,000 gallons of drinking water can be made from the sea, per day!

The new water well drilling machine is also included in this shipment and will soon be used to drill new wells where they are needed. The photo at the right shows some of the men who helped with the loading on December 5. Brother Joel Meredith, director of WWLMS supervises the loading.



The orange crates shown at the right are survival kits, donated by **D R Strategies** of Dallas, TX who gave 200 units. Each of these includes enough supplies to provide shelter and survival-grade materiel for an average-sized family. With the help of our partnering organization, **Water Wishes** and friends Dustin Price and Kurt Wall, the **Texas Baptist Men** and **ABA Disaster Relief** and Brother Marvin “Moose” Jackson, more than 10,000 ceramic water filters have been shipped to the Islands for distribution.



“The news of the disaster overwhelmed us with the feeling of needing to be there...to be somewhere significant to help. Gradually over the days following we began to realize the best place to be was where we were that we may prepare for what lies ahead.”



One of the two reverse osmosis water makers is seen in the photo to the left as Jeff Foster and Bobby Shockley of Promise Land Baptist Church, Hamburg, AR along with two other men load it into the container. This donation comes from **Living Water International**, Houston, TX. **LWI** is sending two men to the field in early February, one of whom is Brother Dave Kisson of Heritage Baptist Church, Missouri City, TX, who will be training us in the operation of these units. I can hardly express what we feel at the outpouring of compassion from so many of you who have offered so much in this relief effort. Our work has yet to begin but with the supplies shipped out and our anticipation of their arrival during the week of January 19th, we are already looking ahead at the enormous task awaiting.

It is important to remember that our first priority is evangelistic. In the course of fulfilling our ministry, we will share all that has been given to relieve and to comfort victims without hesitation and without delay. All the things supplied are for long-term use so that both now and in the future we will be better able to deal with such calamities.

December's work moves ahead...

With welding completed on the bulwarks and underneath the deck on the center beam, the deck has now been primed and is ready for final painting. The photo at the right shows the last coat of red primer applied stem to stern. We are ready to begin finishing the hull exterior this month. The welders have moved below decks and are working now on the few partitions that are to be installed in the living spaces. Those include the three ship's heads, the aft state rooms and crew's quarters and the tool storage room. We have chosen to reserve most of the carpentry work for men who are coming from the States in January.



Brother Steve Collins of Promise Land Baptist Church, Hamburg, AR wheels in another of the 200 survival kits from D R Strategies as we loaded the containers on December 5. Steve is our water well drilling expert who is coming to Davao in March to train our RIM team in the use of our new drilling rig!

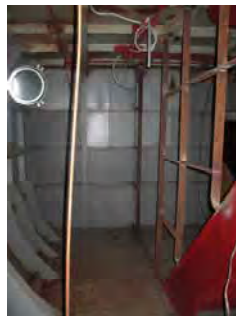


RIM team member, Pastor Nelmar Sumatra is pictured here finishing the welding on the starboard side bulwarks of the sailing ship. We're rushing to finish as much of the vessel as possible from now through the end of February. The ship is needed soon for voyaging. On January 13, 2014 we will mark two years since construction began.



The plywood crate in the photo above contains our new Little Beaver LS 100 water well drilling machine, donated to Remote Island Ministry by Good Shepherd Baptist Church, Shepherd, TX and several other churches and individuals who contributed. This rig is capable of drilling a well for either 4" or 6" well casing up to one-hundred feet deep. We will install manual pumps on the wells we drill and are set to begin drilling in remote villages by the second week of March, 2014. Brothers Don Justice and Joel Meredith are seen in the photo.

Below decks in the aft accommodation hold, the area shown in this photograph is where one of the ship's heads is to be located. It will be complete with a toilet, lavatory and shower. Aft of this room is the location of the ship's laundry. Steel plate will be welded to the framework seen at the right hand side of the picture and a door just this side of the bulkhead. The walls and floor will be cement overlaid with tiles when finished. As can be seen, we still have to install plumbing in this area.



Bibles for the Philippines...

Countless numbers of Bibles for the Philippines have been donated through the years by Pastor W.A. Dillard and FISH Ministries. These Bibles are usually in Tagalog and Cebuano dialects and are distributed far and wide throughout the Islands. Additionally, Pastor Rick McVeigh and the good folks of Rose Lawn Baptist Church, Tulsa, OK have provided hundreds of cases of Bibles which are used in evangelism and distributed among many of our sister churches in the Philippines for use in their ministries. We can never express enough thanks to these who have given so much for people to have a copy of God's Word! The photo at the right shows Pastor Dillard helping to load buckets and lids for assembling water filters.



January & February 2014 helpers from abroad...

We will welcome Chris Davis from our sending church, Victory Baptist, Sherwood, AR in mid-January who is coming to tackle some of the carpentry on the ship. We will also welcome back David Sparks of Longview, TX who plans his return about the same time to help with the carpentry. During the first week of February Brad Bonnette, Dave Kissoon and Donald Hughes of Heritage Baptist Church, Missouri City, TX will spend a week working on the ship to complete the electrical and electronics installation.



REMOTE ISLAND MINISTRIES

Oceanic Asia

USA Address:

Glen, Paula & Juli Knight
5911 Richmond Rd, #26108
Texarkana, TX 75503

Overseas:

PMBS Compound, Marfori Hts.
Davao City 8000, Philippines

Phones: (903) 293-8589
or (903) 280-8779

Email:

glenandpaula@hotmail.com
davao94@yahoo.com

REMOTE ISLAND MINISTRIES

is a ministry of

Victory Baptist Church

515 Sherwood Ave.

Sherwood, AR 72120 USA

Pastor Robert Harris

"Reaching people on the edge!"



So very many people are key to the success of Remote Island Ministries. The photo above shows four of them: (L to R) Chris Davis, Missions Committee member of our sending church; Pastor Joseph Stacks, Forest Grove Baptist Church, Taylor, AR; Pastor Robert Harris, Victory Baptist Church, Sherwood, AR; Pastor Michael Reese, Promise Land Baptist Church, Hamburg, AR. Thanks, men for your help!

A FINAL WORD...

Returning to our field of labor in early January will present special challenges that make this coming year exceptional in so many ways. To face facts is to realize that there will always be calamities throughout our Island nation and thus, the need for aid and comfort and to help rebuild shattered lives. With this in view we see the need to prepare well in advance so that Remote Island Ministries may be on the front line of search and rescue at sea and on distant islands. But more than this, we understand the challenge of greater needs than those that are physical. The pending disaster of millions of souls lost without hope of salvation is at center of our attention. The waypoints along the courses of our missionary journeys mark the paths for gospel preaching. Very soon we weigh anchor and haul on our sails.

"For years I have seen them—coral-fringed and glittering islands in the tropical sun and home to millions of people reachable only by the sea. Imagine being able to go there—to this one and that one and on to others—with the gospel of Jesus Christ! Once, in the past I did go there. And since then, had purposed often to return thinking the time would come and it seemed indeed to be coming. But suddenly what in my mind was work for a later time, confronts me with shock and overwhelming empathy. I close my eyes and see faces and hear sounds from villages of people—laughter and toil and cooking fires burning, fishermen sewing nets beside tiny bancas and children in their schools learning lessons by rote—people who awaited our arrival but now, who are no longer there to greet us. In the work that lies ahead, there is no longer any time to delay for we have already waited too long." —Memoirs of a Missionary, Reflections upon Typhoon Yolanda, Glen Knight

Glen Knight



A father and his children gather fire wood for cooking from debris washed ashore following the typhoon on Leyte Island.